

California Regional Water Quality
Control Board
San Diego Region

Benjamin Tobler
Water Resources Control Engineer


California State Water Resources Control Boards



Our mission

- Our mission is to preserve, enhance and restore the quality of California's water resources, and ensure their proper allocation and efficient use for the benefit of present and future generations.

Regional Board Tools To Control And Abate Pollution From Mexico

	Public Outreach and Liaison	Federal Financial Assistance	State Financial Assistance	NPDES Permits	401s	Enforcement CAO/TSO/CDO	13267/13225 Investigative Orders	TMDLs	Ambient & Receiving Waters Monitoring	Initiate New Legislation	Initiate Litigation
Strategy To Protect Wetland and Estuaries	✓	✓	✓		✓				✓		
Strategy To Control And Abate Sewage (Bacteria)	✓	✓	✓	✓	✓				✓		✓
Strategy To Control And Abate Solid Waste (Trash)	✓	?	?	?			?	✓			
Strategy To Control And Abate Sediment	✓	?	?	?			?	✓			
Strategy To Control And Abate Pollution In Mexico	✓	No	No	No	No	No	No	No	No	No	No
✓	Ongoing										
?	Possible next steps										

TMDLs?

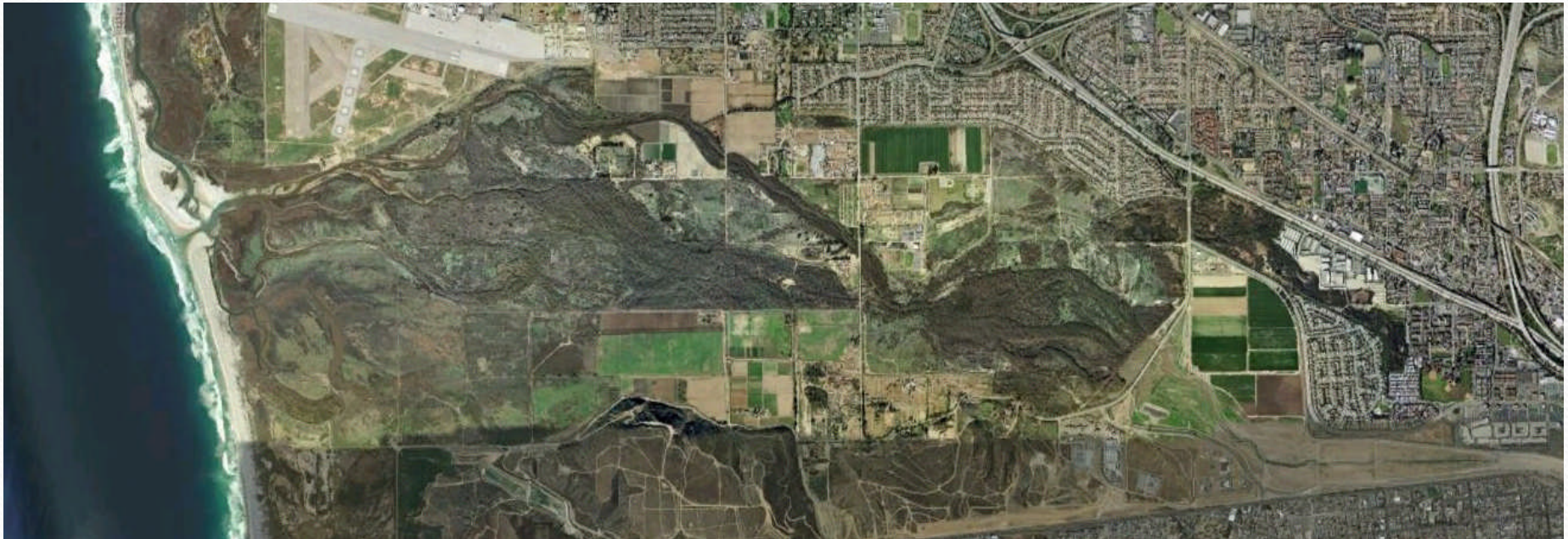
- Section 303(d) of the Federal Clean Water Act (CWA)
- Tijuana River 303(d) listings
 - Eutrophic Conditions
 - Indicator Bacteria
 - Low Dissolved Oxygen
 - Pesticides
 - Solids
 - Synthetic Organics
 - Trash
- Tijuana River Estuary 303(d) listings
 - Eutrophic Conditions
 - Indicator Bacteria
 - Lead
 - Low Dissolved Oxygen
 - Nickel
 - Pesticides
 - Thallium
 - Trash
 - Turbidity

TMDL Challenges

- Number and Type of TMDLs
- Sources and nature of pollutants
- International Issues
- Lack of TMDL funding
- Lack of recent monitoring data

Where do we want to go?

- TMDLs for all 303(d) listed impairments.



How do we get there?

- Coordination with all Stakeholders
- Timely Cooperation
- Regulatory Measures

Opportunities and conflicts

- Continued support from the State Cleanup and Abatement fund
- Regulatory Measures

Actions to get there

- Control of sediment and trash
- Acquisition of funding
- Trash and Sediment TMDLs
- Remaining TMDLs